

## PUBLIC NOTICE

NOTICE IS HERBY GIVEN THAT the Tooele Planning Commission will hold two public hearings during their business meeting scheduled for **Wednesday, January 22, 2025 at 7:00 p.m.** in the City Council Chambers of City Hall located at 90 North Main Street, Tooele, Utah. The complete public notice is posted on the Utah Public Notice Website [www.utah.gov](http://www.utah.gov), the Tooele City Website [www.tooelecity.gov](http://www.tooelecity.gov), and at Tooele City Hall in Suite 227. To request a copy of the public notice for additional inquiries please contact the Tooele City Planner, Kent Page, at (435) 843-2132 or [kentp@tooelecity.gov](mailto:kentp@tooelecity.gov)

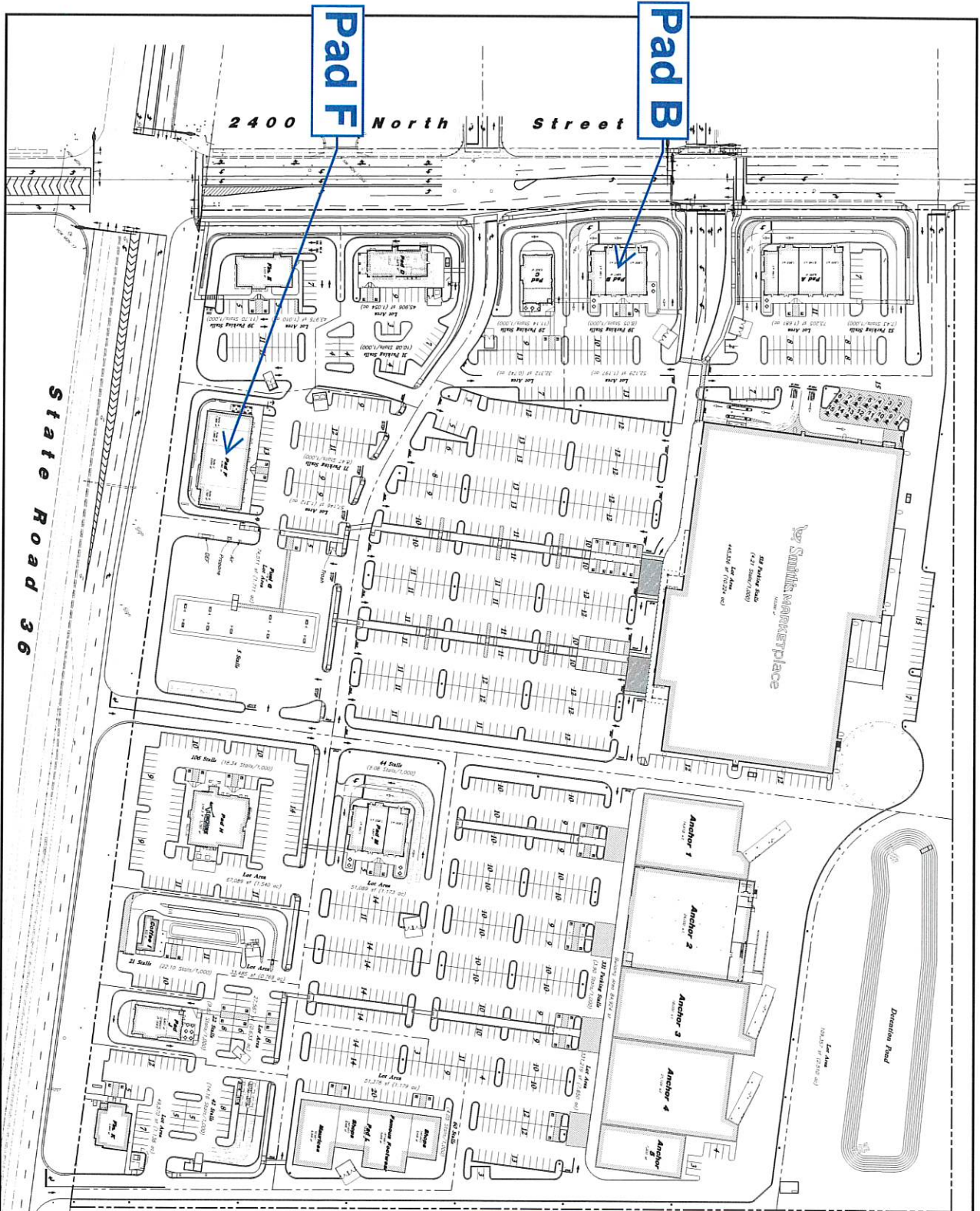
**Two Separate Public Hearings** to consider two Accessory Drive Through Facilities (**Pad B & Pad F**) request by LH Perry Investments, LLC, located at northwest corner of 2400 N. and Main Street (SR 36) in the General Commercial (GC) Zoning District.

We encourage anyone interested to join the Planning Commission meeting electronically through Tooele City's YouTube channel by logging onto [www.youtube.com](http://www.youtube.com) and searching [Tooele City](#). If you would like to submit a comment for any public hearing item you may email [pcpubliccomment@tooelecity.gov](mailto:pcpubliccomment@tooelecity.gov) any time after the advertisement of this agenda and before the close of the hearing for that item during the meeting. Emails will only be read for public hearing items at the designated points in the meeting. Public comment is not accepted for public hearings from the broadcast feed. We encourage you to look for the published agenda for this meeting on the City's website, [www.tooelecity.gov](http://www.tooelecity.gov). Finalized agendas are typically published on the Friday prior to the meeting.

**\*\* Notice – Tooele City is no longer broadcasting meetings via Facebook Live \*\***

Pursuant to the Americans with Disabilities Act, individuals needing special accommodation should notify Kent Page, Tooele City Planner at (435) 843-2132 or TDD (435) 843-2180 prior to the meeting.





Scale: 1" = 60'



**Site Data**  
 Overall Site Area  
 = 1,557,347 sq. ft. (35.755 ac.)  
 Building Area  
 = 569,287 sq. ft. (12.994 ac.)  
 Parking Provided  
 = 1,410 stalls (524,100 sq. ft.)

**Conditional Use Permit Applications for Accessory Drive Thru Facilities**  
 Tooele City  
 Planning Commission  
 Wednesday,  
 January 22, 2025  
 7:00 p.m.  
 90 N. Main Street  
 Tooele

**Conceptual Site Plan**  
**Perry Commercial - Tooele**  
 2400 North & State Road 36  
 Tooele, Utah

**AWA**  
 2010 North Redwood Road, Salt Lake City, Utah 84116  
 (801) 521-8529 - AWR@engineering.net

3 Nov 2024  
 M